



# Ashgrove Primary School Newtownabbey

## Our Weekly Newsletter

ISSUE: 19

FRIDAY 28<sup>TH</sup> JANUARY 2022

### *Rights Respecting Schools*

*Article 14 (freedom of thought, belief and religion) "Every child has the right to think and believe what they choose and also to practice their religion, as long as they are not stopping other people from enjoying their rights"*

*In school we pride ourselves on our ethos of tolerance and respect, we also value our Christian ethos and invite local Churches and organisations to speak at Assembly.*

### PARENT TEACHER CONSULTATIONS

This term's Parent-Teacher consultation are planned to be held on the afternoons of **Monday 28th February to Wednesday 2nd March**, with school closing at 12:30pm. Following guidance from the Department of Education, our consultations will again be held remotely using Zoom. Please complete the form below to select your preferred day and time for the consultation and we will do our best to accommodate your selection.

**Parent-Teacher consultations will last between 10-15 minutes.**

Confirmation of the day and time for a Zoom meeting along with the required meeting code and password will be sent at least one week before the interviews.

The form can be found here: <https://forms.gle/mn9rF6GVViCVxZgc7>

### PRIMARY 7, SCHOOL TRANSFER INTERVIEWS

Last week, I wrote to all Primary 7 parents offering you to select a date and time to discuss Post Primary Transfer Forms. It is not compulsory for you to attend, but many parents appreciate some guidance.

PLEASE REMEMBER THAT YOU AS PARENTS ARE RESPONSIBLE FOR THE COMPLETION OF THE ONLINE POST PRIMARY APPLICATION FORM, BUT WE ARE HERE TO HELP IF NEEDED. (more information in the next few pages).

**Learning, Caring, Growing Stronger Together**

WWW.ASHGROVEPRIMARYSCHOOL.COM

## PRIMARY 1 ADMISSIONS FOR SEPTEMBER 2022

The EA application portal will close on **FRIDAY 28<sup>TH</sup> JANUARY**, applications received by **12.00 noon are treated as 'punctual'**. Please remember to upload a copy of your child's birth certificate while making the application.

If you have submitted an application to Ashgrove PS you should have received a confirmation email with a reminder to provide other supporting documentation e.g. proof of address.

If you need help with the application process or would just like to visit our school please call in at any time!

## WORLD BOOK DAY CELEBRATIONS- FRIDAY 4<sup>th</sup> MARCH

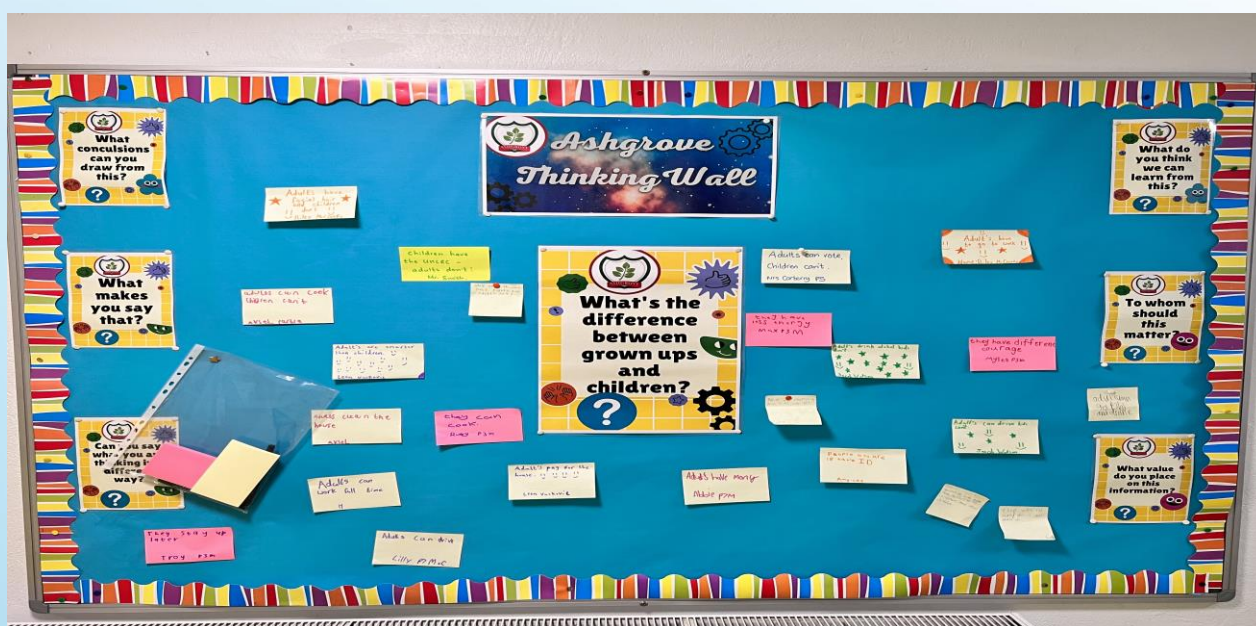
On **FRIDAY 5<sup>TH</sup> MARCH** we will celebrate **WORLD BOOK DAY**. World Book Day celebrates the joy and value of books and reading, especially for children. To help mark the occasion we are asking all pupils and staff to come to school **dressed as their favourite book character**- this could be Horrid Henry, Gangsta Granny, Little Red Riding Hood, Alice in Wonderland...

Please remember, we do not expect parents to buy expensive costumes for this occasion, a homemade costume or something you have at home is great!

## THINKING WALL

In previous Newsletters I have shared with parents that we are working towards becoming an accredited Thinking School. This is a school development initiative established by the University of Exeter. Part of the programme is to extend and challenge children's thinking through the use of Thinking Frames and also through the use of effective questioning.

Mrs Carberry in school has made a Thinking Wall for our children to write answers using post-its... our Question for the month of January is, "What's the difference between children and adults?"... see below for some of our thoughts in Ashgrove.



# POST PRIMARY SCHOOL APPLICATIONS

## KEY DATES

- 12<sup>th</sup> January 2022 Admissions criteria published for post-primary schools.
- 1<sup>st</sup> February 2022 Post-primary applications open at 12 noon for parents to make an application for their child.
- 23<sup>rd</sup> February 2022 Post-primary applications closes at 4pm.
- February – May 2022 Post-primary schools consider applications and apply their admissions criteria to select applicants. EA moves those applications that have not been selected to their next preference school for consideration, through a clearing-house system, until applicants have either been selected by a school or parental preferences exhausted.
- 21<sup>st</sup> May 2022 Parents access the outcome of their child's application via the online portal.

## PLACES ARE NOT ALLOCATED ON A FIRST COME, FIRST SERVED BASIS.

Post-Primary Schools WILL NOT consider applications until after the closing date. It is important that you:

- Find schools in your area.
- Read the Admissions Criteria.
- Check what supporting documentation is required to be uploaded with your application
- List at least four preferences on your application.
- Check whether transport assistance will be available for your child. Transport Eligibility Checker –click the link below...

<https://www.eani.org.uk/help-available/home-to-school-transport>

## EXCEPTIONS

The following children are exempt from the post-primary admissions process:

**Children with a statement of special educational needs.** You should not complete an application if your child has a **Statement** of Special Educational Needs as your child's placement will be arranged through the EA's Special Educational Needs Department. However, if your child is undergoing statutory assessment and does not currently have a statement you still need to apply for a post-primary place.



## HOW TO RAISE A CONCERN IN SCHOOL...

*If you are worried or have a concern about any aspect of school life, you should follow the procedure below...*

1. Speak with the class teacher – most often concerns can be addressed and resolved at this stage.
2. If the concern is not resolved, speak with the Head of Key Stage (Miss Morrison or Mrs Torrie) or Vice Principal (Mr McComb).
3. Address the concern to Mr. Smith (Principal).
4. Following the steps above, if the concern has not been resolved, you may write to the Board of Governors.

## MATHS WEEK & NSPCC NUMBER DAY

During the week commencing **Monday 31<sup>st</sup> January** we are celebrating Maths Week in school. Mrs Ewing (Numeracy leader in school) has already sent a note home with all children explaining the format of Maths Week which culminates in NSPCC Number Day on Friday 4<sup>th</sup> February.

For the NSPCC Number Day we are raising sponsorship for this worthy cause... all donation are welcome of any amount – we appreciate your generosity and support.

## COVID-19 UPDATES

I am sure many of you will already be aware that the Executive announced recently that the minimum period of self-isolation for those who test positive for COVID has now reduced to from seven to five days. Those who test positive will need to produce negative lateral flow tests on day five and day six to end their period in isolation. This potentially means that our children, may return to school on day 6 provided they have negative LFD tests on days 5 & 6.

A pattern of reinfection is beginning to emerge in limited cases in school – some children who had COVID earlier in the academic year are now testing positive again. Thankfully symptoms appear to be mild, but of course we continue to ask you not to send your child to school if they are unwell or showing any symptoms of COVID.

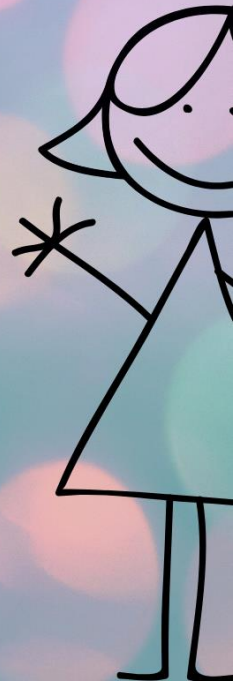
As a reminder, continue to report all absences from school using our online form available on our website under the Parents Section.



# Friendship Friday

**Friendship Friday is on  
Friday 28th January  
The theme this month is..**

*Respect*



*Ashgrove Primary School*



## SAFER INTERNET DAY, TUESDAY 8<sup>TH</sup> FEBRUARY

Safer Internet Day is on **Tuesday 8<sup>th</sup> February**. Mr Kelly has organised some internet safety workshops for P7 pupils.

Other classes will learn about how to stay safe online and take precautions. The NSPCC have published advice to families on setting parental controls on mobile, tablets and computers....

All mobiles, tablets and computers have parental control settings, which can differ between devices, these include:

- allowing or disallowing in-game or in-app purchases
- settings such as location settings and what information your child is sharing
- wellbeing settings to help with limiting screen time.

You can get more advice about setting up controls on different devices from your mobile provider and the [UK Safer Internet Centre](#).

On Apple devices such as iPhone, iPad, Apple Watch, Apple TV etc. there are features available for parents all tied into an account. You can set content and privacy restrictions, prevent purchases, allow or disallow apps and more.

### SCHOOL DINNER MENU, £2.60 PER DAY

**VEGETARIAN OPTIONS ARE AVAILABLE EACH DAY**

#### **Monday 31<sup>st</sup> January**

Fish Fingers, Baked Beans, Potatoes & Crusty Bread

~

Watermelon & Yoghurt

#### **Tuesday 1<sup>st</sup> February**

Chicken Curry, Boiled Rice, Carrot Sticks & Naan Bread

~

Biscuit & Fruit

#### **Wednesday 2<sup>nd</sup> February**

Roast pork, Stuffing, Diced turnip, Broccoli, Roast & Mashed potatoes & Gravy

~

Cheese & Crackers

#### **Thursday 3<sup>rd</sup> February**

BEFFET

Sandwiches, Chicken Goujon, Cocktail Sausages, Crusty Bread, Pizza & Carrot Sticks

~

Muffin & milkshake

#### **Friday 4<sup>th</sup> February**

Hawaiian Burger, Salad & Coleslaw with Chips

~

Fruit & Yoghurt

#### **HEALTHY BREAK 30P PER DAY**

Tuesday: Toast, Pear & Carrot

Friday: Crusty Bread, Red Grapes & Celery

